

# The new Laborelec Vibration Monitoring System

## Why make the change?



### Assessing the condition of large turbogroups

Launched in 1985, ENGIE Laborelec's Vibration Monitoring System (LVMS) now has more than 100 satisfied users worldwide, who appreciate its crucial role in assessing the condition of large turbogroups. And the tool has certainly proved its value: it has already helped prevent millions of euros worth of damage and production losses, and has led to millions in savings on maintenance, repairs and replacements.

### A new and more robust system

So, why make the change? Because technology has evolved and has meant that ENGIE Laborelec could turn LVMS into a more compact and robust system that is even easier to install and maintain. And all of this without compromising the tool's ease of use.

## Benefits of the new LVMS

### More compact

The new LVMS features fewer components and less cables. The result? The tool now takes up less than 70% of the space of its predecessor: all components are in one single casing.

### More reliable

Reducing the length of the cables and the number of components not only reduces the tool's footprint, it also lowers the risk of signal interference.

### More stable

It's not only the hardware that has been upgraded, it's the software too. Without changing its look and feel, and its highly regarded ease of use.



*ENGIE Laborelec's Vibration Monitoring System facilitates the condition assessment of large turbogroups.*



## How it works

### Prior to installation

♥ Tell us the dimensions of your current LVMS installation, and we can prepare a new cabinet frame with all the new hardware pre-installed and pre-wired to ensure quick and smooth installation on site.

♥ The casing is shipped to you, together with detailed instructions and electrical connection plans.

### Installation

♥ Our expert arrives on site to dismantle the existing LVMS installation, install the new hardware and connect all the wires.

♥ Once the installation is complete, all connections and automated back-up functions are tested.

### Commissioning

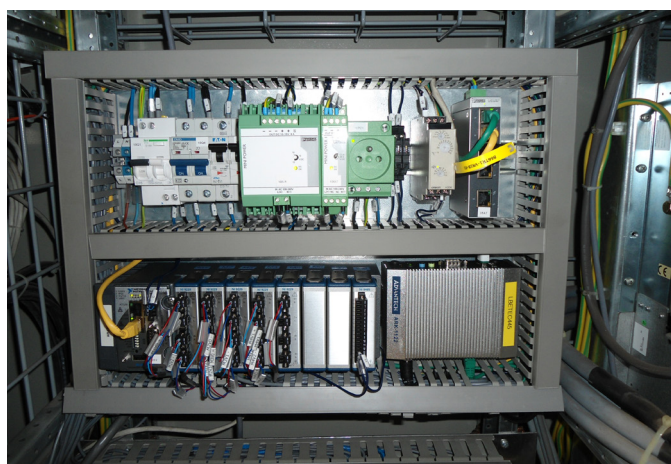
♥ Depending on the size, the new tool can be commissioned the same day as installation work.

“

*The replacement of our old vibration monitoring by the new LVMS4 was swift and smooth, the small volume of the hardware fit the space available to avoid additional costs. The new interface of the software is very user-friendly and makes easier the understanding by the operators of a vibration event on turning gear and in operation.*

*Dupuis Dominique  
Operations Manager at ENGIE*

”



*The new and improved ENGIE Laborelec Vibration Monitoring System features fewer components and shorter cables, making it all fit into one small easy-to-install casing.*

### Would you like to know more?

**ENGIE Laborelec**  
**Sébastien Grégoire**

sebastien.gregoire1@engie.com

+32 (0)2 382 05 26

www.laborelec.com

## Five reasons for you to choose Laborelec

- Wide-ranging technical expertise in electricity generation, grids, and end-use
- Customers enjoy enhanced profitability and sustainability of energy processes and assets
- Unique combination of contract research and operational assistance
- Independent advice based on certified laboratory and field analysis worldwide
- More than 50 years of experience