

### ■ Objective

OPC (Object linking and embedding for Process Control) is a standardised interface which makes it possible to link automation and data acquisition systems with the control room and/or office software applications.

The course is a practical introduction for newcomers to this modern technology and it specifically focuses on the OPC DA version, which allows real time interfacing.

### ■ Target group

This training course is essentially addressed towards process control circuit maintenance specialists. In an adapted form, this training is also very useful for operations managers in order to familiarise them with the possibilities offered by modern communication techniques within plant data management applications.

No previous knowledge of data processing is required, but students must be familiar with Windows.

### ■ Duration

One day (groups of 8 persons).

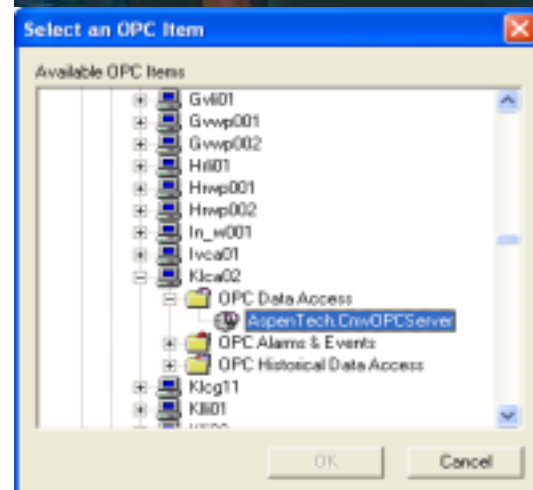
### ■ Content of the training

1. Theoretical introduction
2. Practical application
  - 2.1. Demonstrations of applications used and developed by Laborelec
  - 2.2. Practical applications to be carried out by the students

### ■ Specific aspects

This course is the result of the experience we have acquired in the development of communications between the various simulation and optimisation tools used by Laborelec to design optimal control structures, and in the study of communication applications involving DCS systems and databases.

■ **Responsible:** [philippe.demlenne@laborelec.com](mailto:philippe.demlenne@laborelec.com)  
Tel: + 32 (0)2 382 03 11



### Five reasons for you to choose Laborelec:

- you have one-stop shopping for your energy needs;
- you get access to more than 40 years of experience;
- you get rapid service with reliable solutions;
- you increase the profitability of your installations;
- you benefit from independent and confidential advice.

Rodestraat 125  
B-1630 Linkebeek  
Belgium  
Tel: + 32 (0)2 382 02 11  
Fax: + 32 (0)2 382 02 41

[www.laborelec.com](http://www.laborelec.com)